

# VISIONING LAKELAND: RESTORATIVE JUSTICE THROUGH SCENARIO PLANNING

Community Planning Studio – Fall '23



Partnership for  
Action Learning  
in Sustainability

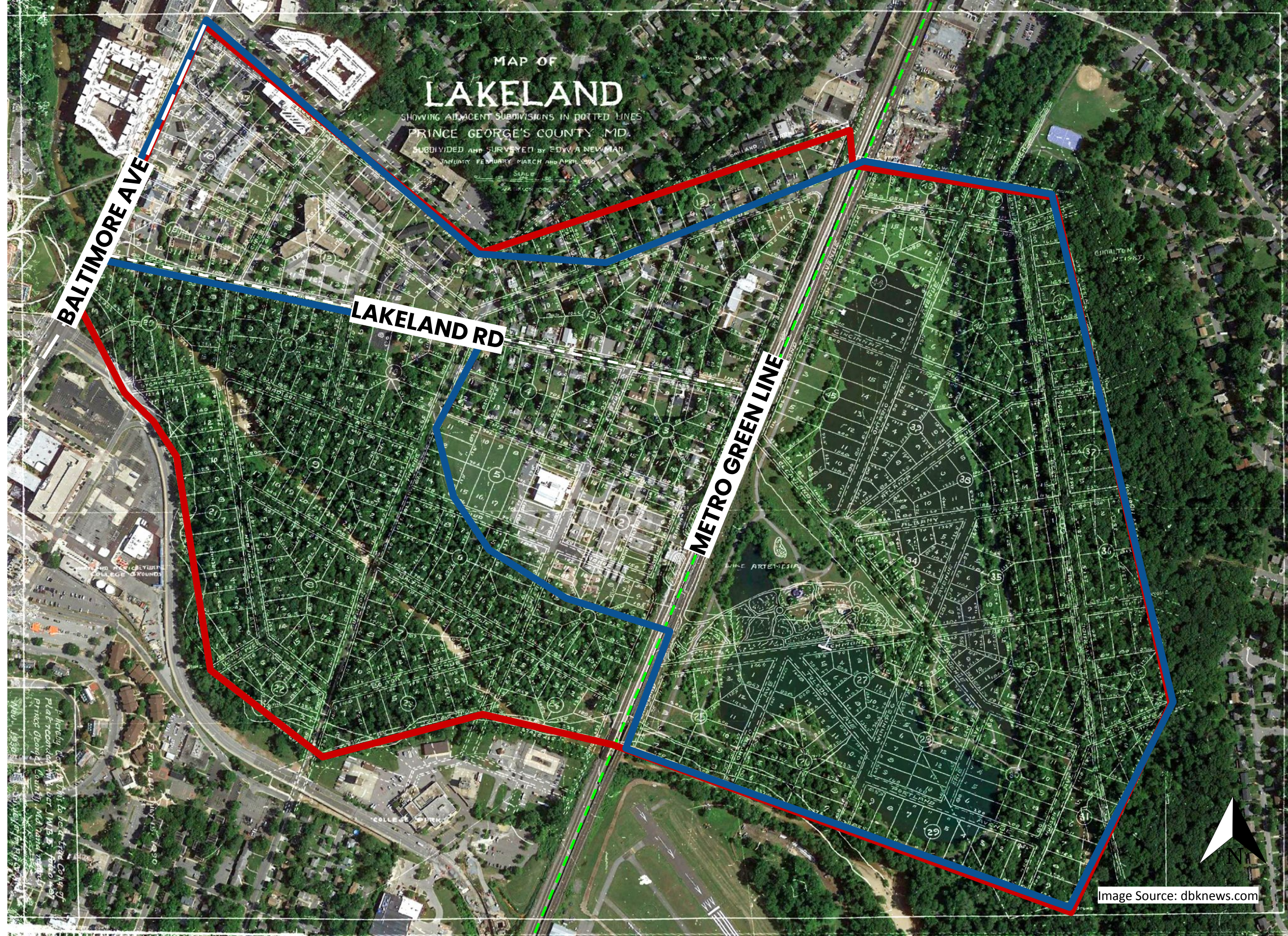


# Focus Area

Lakeland  
Neighborhood  
in College Park

Pre-Urban  
Renewal  
(red)

Post-Urban  
Renewal  
(blue)





# About the Project

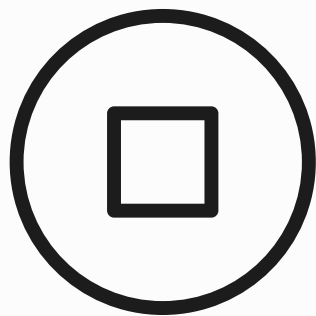




# WHAT IS SCENARIO PLANNING?

**Process:** supports decision-making amid uncertainty

**Goal:** produce a set of plausible potential futures



Status Quo



Reform



Revolutionary



# THREE THEMES



Housing and  
Land Use



Community  
Infrastructure




Climate  
Change



# MEET SHAUNA







**STATUS QUO**

**SCENARIO**



# In 2033, a status quo Lakeland will be...



Facing a decline in homeownership and rise in student rentals



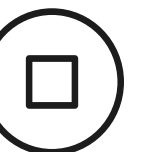
A close-knit but shrinking community with an aging leadership, concerned about preserving its legacy



Dealing with flooding and rising temperatures that threaten residents' health and homes



# Shauna in the Status Quo Scenario





A photograph of a city street during a rainstorm. The street is wet and reflects the sky. On the left, there are trees and a residential building. On the right, there is a tall, modern apartment building. A person with a blue umbrella is walking on the sidewalk. In the foreground on the left, there are orange and white striped construction barriers and a sign that says "SIDEWALK CLOSED".

**Restorative Justice requires far more than just a continuation of the Status Quo.**



A large yellow circle is positioned behind the word 'REFORM'. A yellow arc is visible in the bottom-left corner of the image.

**REFORM**

**SCENARIO**

A large yellow arc is positioned on the right side of the image.



# In 2033, a reformist Lakeland will have...



Multigenerational ownership; programs that prioritize families

but...

Rising housing costs and more student renters



Stronger connectivity, opportunities for economic growth

but...

Limited control over public spaces and lake access



Climate change infrastructure

but...

A limited potential as a sustainable community



# Shauna in the Reform Scenario





**Restorative Justice requires  
more than Reform. Reform  
does not go far enough.**





The background features a large yellow circle on the left and two yellow arcs, one on the left and one on the right, creating a frame-like effect.

# **REVOLUTIONARY**

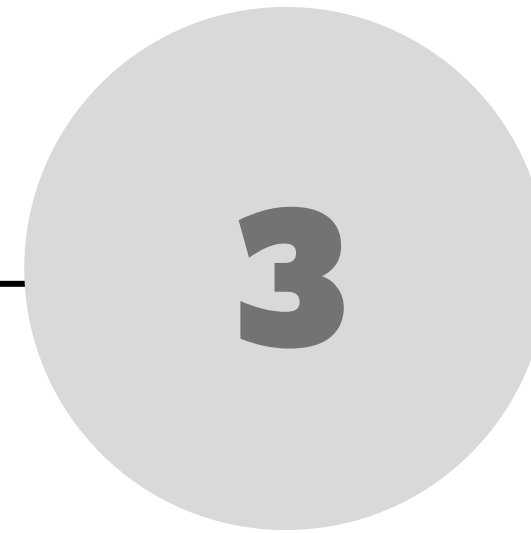
## **SCENARIO**



# REVOLUTIONARY SCENARIO HOUSING & LAND USE



Establish housing  
as a human right.



Increase the amount  
of housing while  
preserving  
Lakeland's historic  
neighborhood  
character



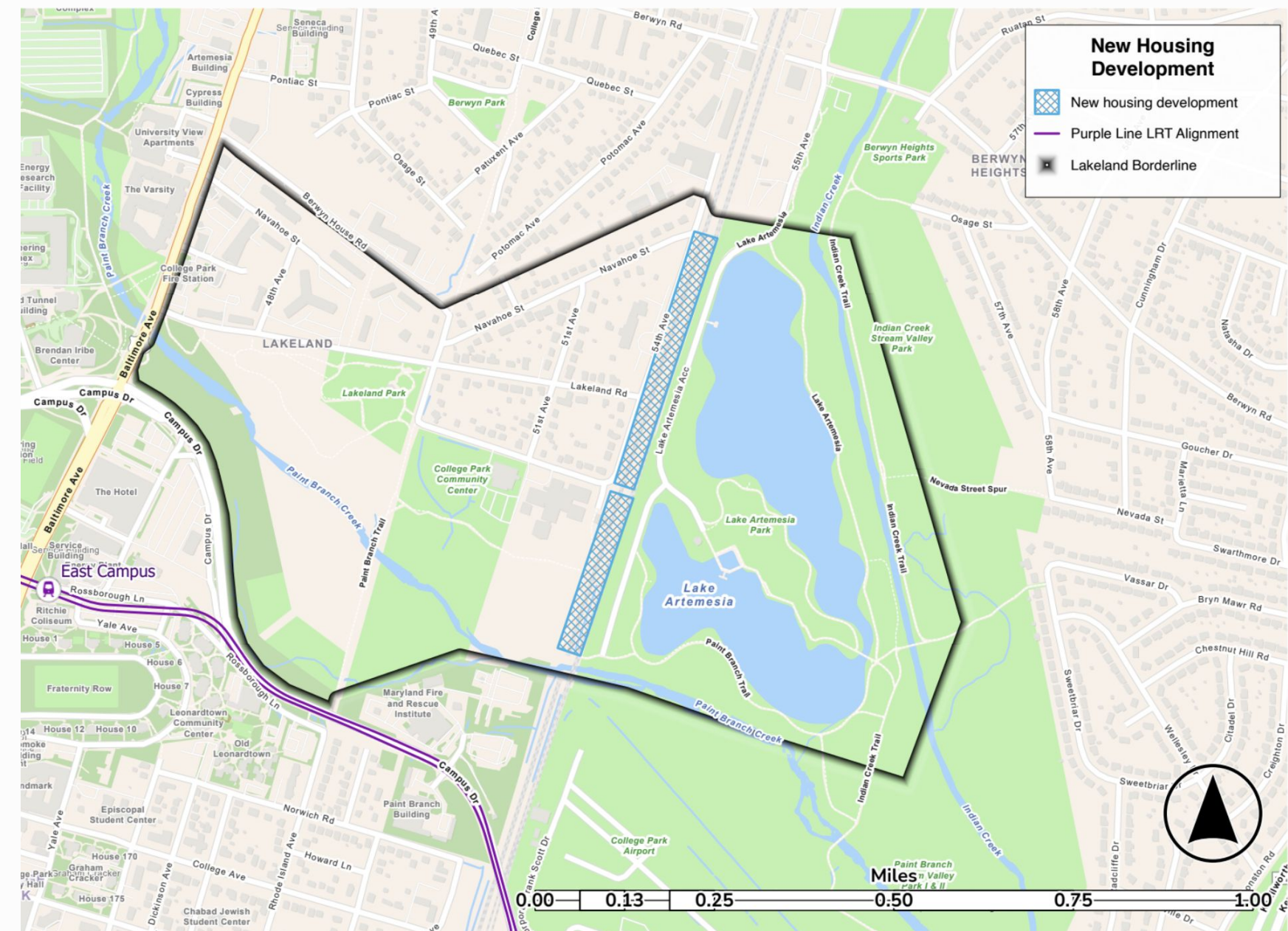
2.2



Revolutionary

## Restore housing justice for Lakelanders who were harmed by Urban Renewal through reparations

Increase the quantity of buildable land in Lakeland by submerging the CSX and Metrorail underground, creating low-rise, gentle-density housing opportunities that overlook the lake





A photograph of a grassy area with trees and a railway track in the background. The word "CURRENT" is overlaid in large white letters. The scene includes a concrete curb in the foreground, a grassy field, several large trees on the left, and a railway track with gravel bed and wooden ties in the middle ground. Behind the track is a grey fence and more trees. In the far background, mountains are visible under a cloudy sky.

**CURRENT**



A scenic landscape photograph featuring a large, leafy green tree on the left side, partially obscuring the view. In the foreground, a paved path made of light-colored, rounded stones leads towards the right. The middle ground shows a calm body of water, likely a lake or pond, reflecting the sky and the surrounding greenery. The background is filled with a dense line of trees under a cloudy sky. The word "PROPOSED" is overlaid in large, bold, white capital letters across the center of the image.

**PROPOSED**





**CURRENT**





**PROPOSED**



# In 2033, a revolutionary Lakeland will...



Have diverse housing options; be a renowned example of restorative housing justice



Be socially and physically connected in new ways



Build and maintain its own climate resilience and sustainability practices



# Shauna in the Revolutionary Scenario





# **Restorative Justice in Lakeland requires Revolutionary Action.**





# The Final Report

**Dr. Clara Irazábal, Professor**

irazabal@umd.edu

**Asia Jones, MCP & MPH Candidate**

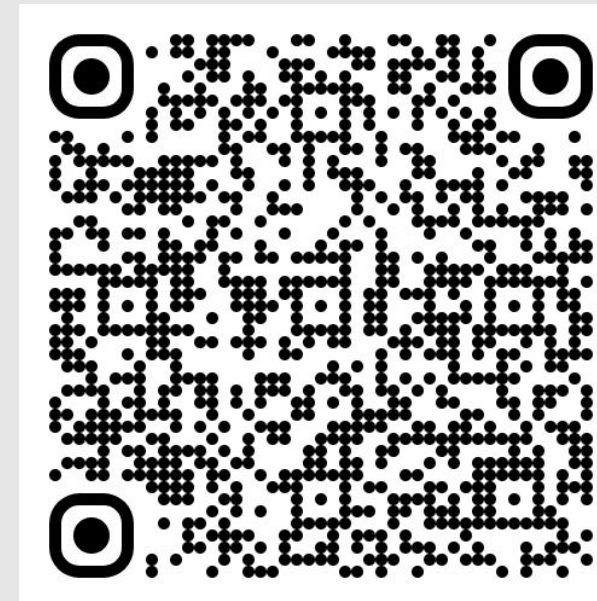
jonesa3@umd.edu

**Mimi Sanford, MCP Candidate**

sanfordm@umd.edu

**Dominique Gebru, MCP**

dominique.gebru@gmail.com



download the report



# **QUESTIONS AND FEEDBACK**